

Installation Manual

CITROEN BERLINGO XL 5DR
CIT-BERXL-5-C



Shades



Side Shades



Port Shades



Tailgate Shades

Fixing Clips



CL-M12 x 12



CL-P02 x 2



CL-M05 x 2



CL-M14 x 1



CL-W01 x 1



CL-T01 x 1



Installation

CITROEN BERLINGO XL 5DR
CIT-BERXL-5-C

Components Needed



Side Shades



CL-M12 x 2



CL-M05 x 2



CL-T01 x 1

Side Shade Installation

STEP 1



STEP 2



STEP 3



STEP 4



STEP 5



STEP 6



Installation

CITROEN BERLINGO XL 5DR
CIT-BERXL-5-C



Side Shade Installation

STEP 7



STEP 8



STEP 9



STEP 10



Repeat this whole process for the other side.

Installation

CITROEN BERLINGO XL 5DR
CIT-BERXL-5-C

Components Needed



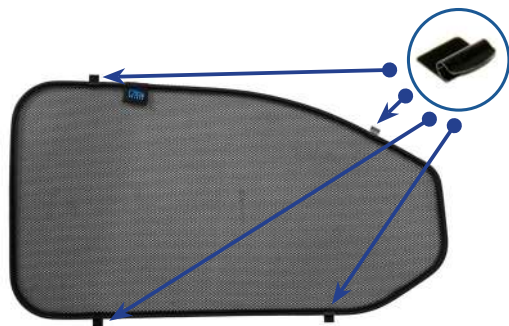
Port Shades



CL-M12 x 8

Port Shade Installation

STEP 1



STEP 2



STEP 3



STEP 4



STEP 5



STEP 6



Repeat this whole process for the other side.

Installation

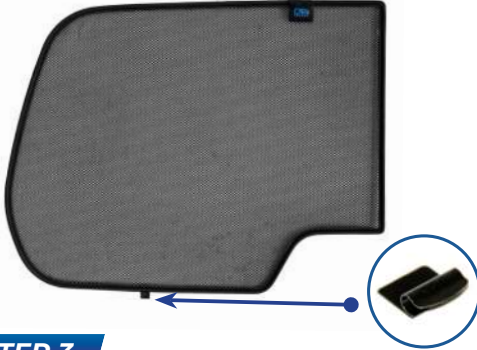
CITROEN BERLINGO XL 5DR
CIT-BERXL-5-C

Components Needed



Tailgate Shade Installation

STEP 1



STEP 2



STEP 3



STEP 4



Press and hold clips in place for 30 Seconds

STEP 5



Position clip along line shown

STEP 6



Repeat steps 3 & 4 for the second P02 clip

Installation

CITROEN BERLINGO XL 5DR
CIT-BERXL-5-C

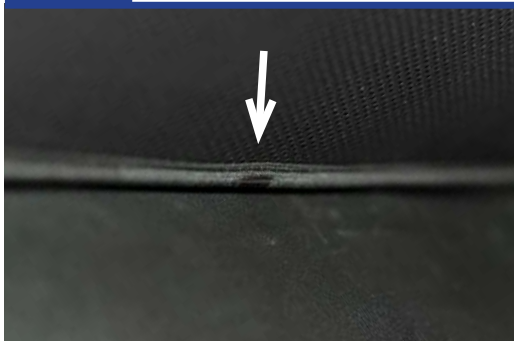


Tailgate Shade Installation

STEP 7



STEP 8



STEP 9



STEP 10



STEP 11



STEP 12



Repeat this whole process for the other side.

Installation

CITROEN BERLINGO XL 5DR
CIT-BERXL-5-C



Tailgate Shade Installation

STEP 13



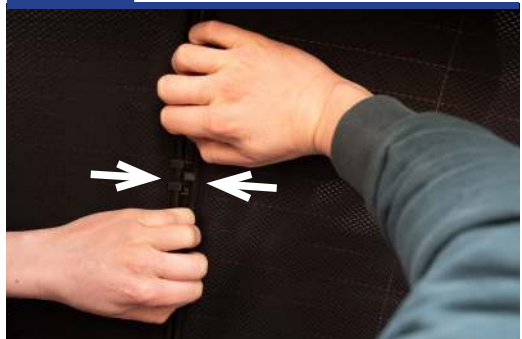
STEP 14



STEP 15



STEP 16



STEP 17

