

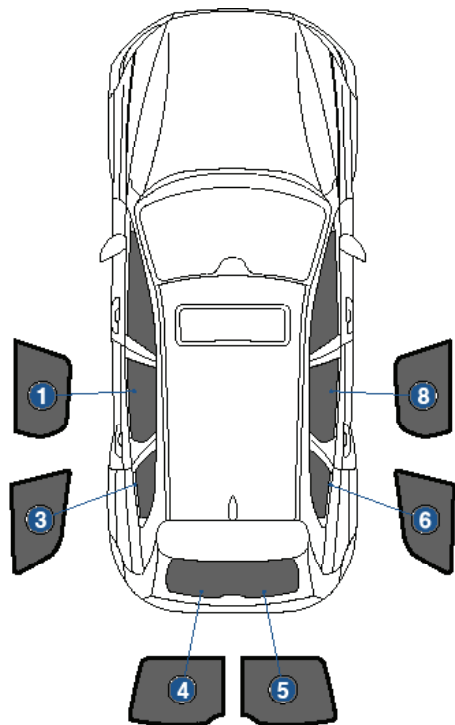
Installation Manual

VOLVO XC60 5DR
VOL-XC60-5-B



COMPONENTS INCLUDED

SHADES



FIXING CLIPS



CL-M02 x 10



CL-M12 x 2



CL-M13 x 2



CL-M14 x 1

Side Shade Installation

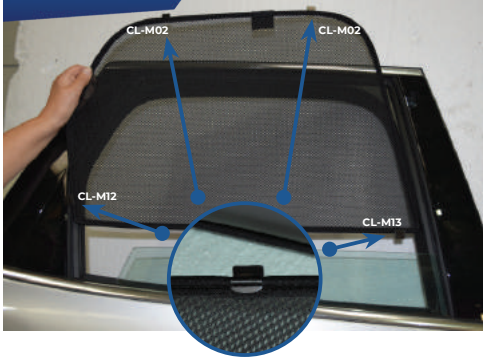
VOLVO XC60 5DR
VOL-XC60-5-B

COMPONENTS NEEDED:



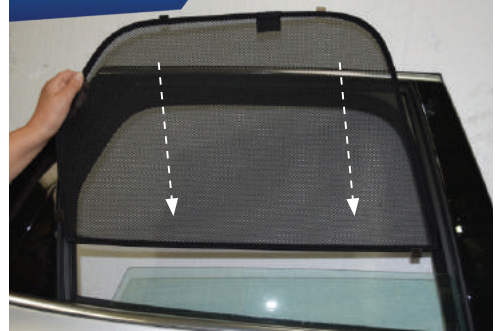
STEP #1

ATTACH CLIPS ON SHADE EDGES



STEP #2

POSITION THE SIDE SHADE



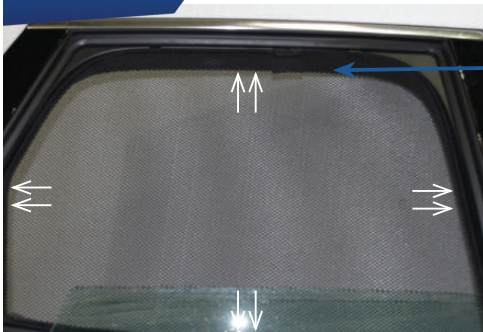
STEP #3

INSERT CLIPS INSIDE WEATHERSTRIP



STEP #4

ENSURE SECURELY FITTED IN PLACE



CAR
SHADES

Quarter Light Shade Installation

VOLVO XC60 5DR
VOL-XC60-5-B

COMPONENTS NEEDED:



STEP #1

ATTACH CLIPS ON SHADE EDGES



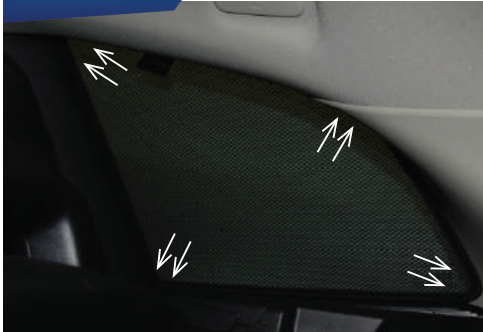
STEP #2

INSERT CLIPS BEHIND INTERIOR TRIM



STEP #3

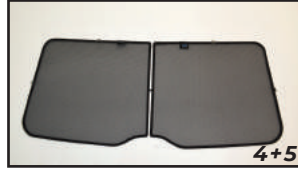
ENSURE SECURELY FITTED IN PLACE



Rear Shade Installation

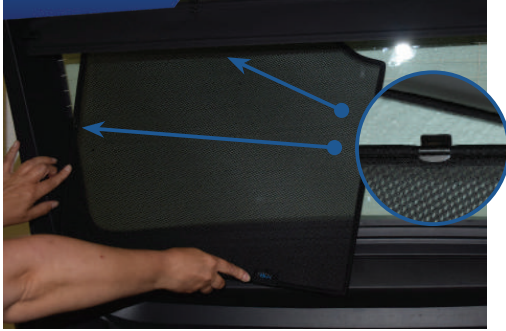
VOLVO XC60 5DR
VOL-XC60-5-B

COMPONENTS NEEDED:



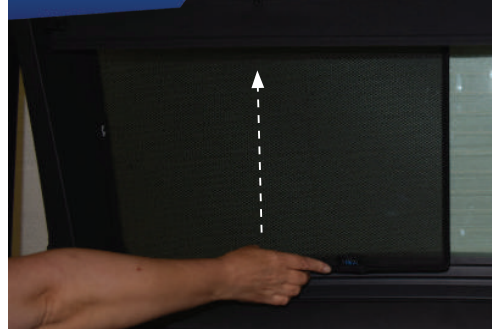
STEP #1

ATTACH CLIPS ON SHADE EDGES



STEP #2

POSITION THE REAR SHADE



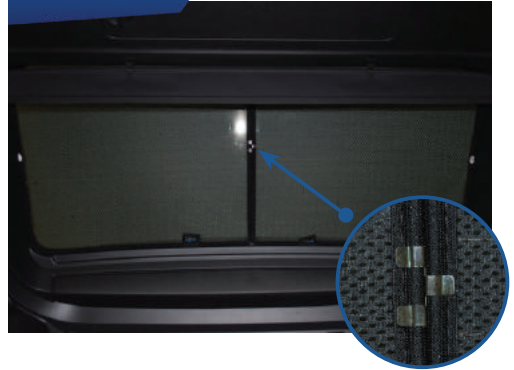
STEP #3

INSERT CLIPS BEHIND INTERIOR TRIM



STEP #4

REPEAT THE PROCESS ON OTHER SHADE



STEP #5

ENSURE SECURELY FITTED IN PLACE



CAR
SHADES